

Role and responsibilities

Identity

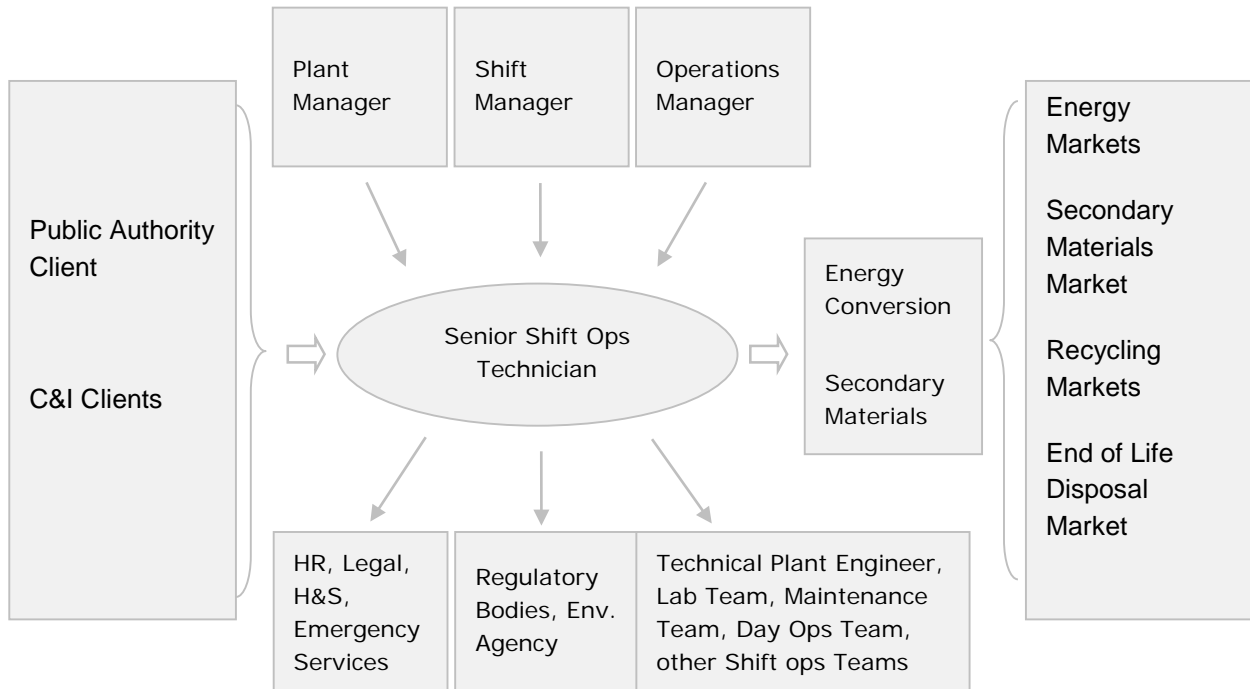
Position title	Senior Shift Operations Technician
Date	December 2015
Line Manager title	Shift Manager
Grade	10

Purpose

(the 'why' of the position, within which limits and according to what objectives)

Why	The role is responsible for the safe, environmentally compliant and efficient operations of an Energy Recovery Facility.
Within	To work within the regulatory standards for health, safety and environment.
According to	The plant operational design parameters and safety and operation maintenance procedures.

Key stakeholder interaction network



Ideal candidate experience

- HNC or time served in Mechanical/Electrical or Process Engineering.
- Operations experience on an EfW or similar process plant is desirable.
- Experience of safe systems of work
- A Health and Safety qualification is desirable.

Area one - Leadership

Details	Delivery measure
<ul style="list-style-type: none"> • Promote good working practice and positive employee relations by administering effective internal relationships. • Embody the Company Values and exhibit through daily interaction with your team. • Effective management of the shift team through task and monitoring of work activities in the absence of the shift manager. • Promote a safety conscious attitude towards work. 	PDD's and 6 monthly review
In order to	influence direct team and peers to achieve goals

Area two - Communication

Details	Delivery measure
<ul style="list-style-type: none"> • Ensure effective internal communication of the Operation and Maintenance situation throughout the shift by providing information for the shift log to identify all health, safety, environmental, operational and maintenance issues. • Ensure an effective shift hand over meeting at the start and end of each shift by providing succinct and correct information on the operational condition of the facility. • Participate in the daily operations maintenance planning meeting, in the absence of the Shift Manager. • Promote a safety conscious attitude towards operational activities through sound use of safe systems of work, accurate and timely reporting of incidents and events. • To provide information on the operational condition of the plant for effective use of the C(O)MMS in raising maintenance work orders. • Keep a succinct and accurate desk log for the process operations during the shift. • Liaise closely with the shift team members to ensure that the incoming waste is properly mixed to achieve an optimum and consistent feed to the furnace. 	<p>CCS Scores</p> <p>Customer satisfaction surveys</p> <p>Timely delivery of shift logs</p> <p>Attendance at meetings</p> <p>H&S incident reporting</p>
In order to	ensure effective dialogue with all stakeholders

Area three - Best Practice Implementation

Details	Delivery measure
<ul style="list-style-type: none"> • To ensure that the physical asset is operated and maintained in accordance with design. • Closely monitor process parameters to ensure the facility is operating within its design specification • Ensure that work practice adheres to SOAM (Safe Operations and Maintenance Procedures) • Responsible for determining issues with the operations of the facility so that effective troubleshooting can determine solutions and actions of problems throughout the shift. • Completion of safety tour checks of the facility during the shift. 	<p>Operational Maintenance KPI's and Improvement</p>

<ul style="list-style-type: none"> • Maintain the operational function of the facility by analysing and prompt reporting of fault conditions, notifying the Shift Manager if necessary. • Implement efficient work practices of the shift team. • Check, diagnose and advise of environmental parameters, analyse and make corrections in accordance with procedures and licence. • Monitor water quality and advise on steam and condensate quality variances and act accordingly, in the absence of the Shift Manager. • Advise the Shift Manager on deviations and alarms. • Continuously monitor, control and adjust within agreed limits plant processes to maximise plant performance and availability 	
In order to	optimise operational/departmental performance and efficiency

Area four - People

Details	Delivery measure
<ul style="list-style-type: none"> • Conformance of Company Policy and Procedures in line with employment legislation. • Stepping up at times of absence of the Shift Manager and cover other shift duties as and when required. 	PDD's Monthly HR Reports USay
In order to	

Area five - Legislative Compliance

Details	Delivery measure
---------	------------------

<ul style="list-style-type: none"> • Manage and control of performance of the facility to be fully compliant with regulatory standards for safety, health and environment. • Comply with safety and environmental audit and CAR resolution • Close scrutiny and adjustment of process parameters to ensure that the facility is operating according to the environmental permit. • Implement safe systems of Work (SSOW) and compliance of contractors and staff with site rules and working standards. • In the absence of the Shift Manager act as senior authorised person for issue and control of permits during shift. To include issue of permit to work for HV operations under the authority of a SAP for HV switching and isolation. • Act as the emergency controller of plant incidents and be the point of call for liaising with emergency services during silent hours, in the absence of the Shift Manager 	<p>CCS Scores and Internal Environmental Health and Safety Audit</p>
<p>In order to</p>	<p>protect our customers, our employees, the environment and the company reputation</p>

Please note

1. In line with our Values and Ethics Charter, the job holder is expected to:
 - Act in an honest, responsible and respectful manner to others.
 - Be responsible for their own professional conduct.
 - Comply everywhere and in all circumstances with the laws and regulations connected with their activities.
 - Comply with our obligations to other parties such as shareholders, associates, clients, suppliers and the community.
 - Ensure the health, safety and wellbeing of employees, customers and other personnel at all times.
2. The content of this job description reflects the main duties and responsibilities of the job and are not intended to form part of the contract of employment. SUEZ may revise the content of the role and responsibilities at its discretion.